

AFESS BROCHURE



BAKERY LAUNDRY FASTFOOD PACKAGING SUPERMARKET
REFRIGERATING KITCHEN NIGHTCLUB/BAR/LOUNGE
BOTTLE/SACHET WATER CATERING FOOD PROCESSING



Your solution partners in industrial Equipment.

OUR CORE VALUES



EXCELLENCE

At AFees, excellence isn't just a goal; it's our foundation. We're dedicated to delivering top-tier products and service.



RELIABILITY

Our commitment to reliability is unwavering. Count on us for dependable solutions, backed by a diligent and skilled team.



ACCOUNTABILITY

We believe quality shouldn't break the bank. AFees offers affordability without compromising on excellence and reliability."

WHY CHOOSE US?

Choose A.Fees for unwavering quality, a dedicated team, extensive resources, user-friendly processes, and affordability. Your success is our priority.

CONTACT US



ABOUT US

A.fess Industrial is a kitchen, bakery, laundry and packaging equipment brand. We are into the production, sale, and distribution of essential kitchen, laundry, packaging and hospitality tools and equipment; needed by those bake, produce and create food in commercial quantities.



OUR VISION

To establish our presence as the embodiment of the past and future of industrial equipment.



OUR MISSION

to consistently provide excellence in equipment and experience for the best price. Furthermore, ensuring that only the best is stocked & sold through innovation, partnership and delivery, all for the steady growth of all stakeholders.



No 81 Olojo drive opp ever right Lab .



Content

- ✓ **BAKERY EQUIPMENT**
- ✓ **FOOD PROCESSING EQUIPMENT**
- ✓ **COOKING EQUIPMENT**
- ✓ **REFRIGERATING EQUIPMENT**
- ✓ **BEVERAGE SERIES**
- ✓ **SNACKS EQUIPMENT**
- ✓ **PACKAGING SERIES**
- ✓ **BUFFET EQUIPMENT**
- ✓ **SUPERMARKET EQUIPMENT**
- ✓ **STAINLESS STEEL EQUIPMENT**



Product: **BAKING EQUIPMENT**





HLM5A/HLM7A
(without cover)



HLM5B/HLM7B (with cover)
HLM5C/HLM7C (with cover)

Spiral Mixer Series (Gear)

Model	HLM5A	HLM5B	HLM5C	HLM7C
Volume	5L	5L	5L	7L
Voltage	220V/110V	220V/110V	220V/110V	220V/110V
Power	0.2KW	0.2KW	0.2KW	0.2KW
Packing (mm)	485X320X500	485X320X500	485X320X500	485X320X500
G.W (kg)	17	17	17	18
Attachment	Whipperx1 Beaterx1 Hookx1	Whipperx1 Beaterx1 Hookx1 Coverx1 Safety switchx1	Whipperx1 Beaterx1 Hookx1 Coverx1 Safety switchx2	Whipperx1 Beaterx1 Hookx1 Coverx1 Safety switchx2



B10-BL
B15-BL
B20BL



B30E

Handle for choose



Dough hook
For dough & yeast mixture

Beater
For eggs, cream, batters
Whipper

For making cakes, biscuits, pastry, mashed potatoes

SPlanetry Mixer (Gear)

Model	B 10-BL	B 15-BL	B 20-BL	B30E
Volume	10	15	20	30
Voltage	220V/110V	220V/110V	220V,380V/50Hz	220V,380V/50Hz
Power	0.27KW	0.37KW	1.1KW	1.5KW
Speed	170(90)/340(160)/300	170(90)/340(160)/300	105/180/425	105/204/483
Capacity	1	1.5	3	3~6
Dimension	444x360x650	444x360x650	513x405x762	560x600x820
N.W(kg)	50	52	65	77



**Immersion
Blender (220W)**

	Drive	Accessory	Accessory
Model	IB220MF/IB220MV	BLD160	WIK185
Speed (rpm)	15000/2500-15000	-	-
Power	220W	-	-
Voltage	110V/60Hz	-	-
Dimension(mm)	A0 304B0 75		
Weight(kg)	1.1	25	-
Length	-	0.35	0.4



Spiral Mixer Series (Single speed, single phase)

Model	HS20	HS30	HS40
Volume	20L	30L	40L
Voltage	220V/110V	220V/110V	220V/110V
Motor Power	1.5KW	1.5KW	1.5KW
Mixing limited	8	12	15
Time of mixing	10-12	12-18	12-18
Speed of Barrel	25	25	25
Speed of Mixer	250	250	250
Dimension	750x500x770	770x550x850	770x550x850
N.W	77	87	97
	Single speed	Single speed	Single speed



HS100A
HS125A
HS150A

Spiral Mixer Series (Double speed, three phase)

Model	HS100A	HS125A	HS150A
Volume	100L	125L	150L
Voltage	380/50Hz	380V/50Hz	380V/50Hz
Motor Power	3.3/4.5	5/7.5	
Mixing limited	40	50	70
Time of mixing	12-18	12-18	12-18
Speed of Barrel	12.5/25	12.5/25	12.5/25
Speed of Mixer	125/250	125/250	125/250
Dimension	1080x680x1200	1360x820x1220	1360x820x1320
N.W	320		
	Double speed	Double speed	Double speed

10L Table Top Mixer

MODEL: DH-10

CAPACITY: 10 L

MAX KNEADING

CAPACITY: 3 KG

MIXING SPEED: 160 RPM

POWER: 0.95 KW

VOLTAGE: 220V 50HZ

SIZE: 495X302X385 MM

WEIGHT: 58 KG





ET-RFL-11C



ET-RFL-12C



ET-RFL-12C

Stainless Steel Standard Gas Oven

Model	ET-RFL-11C	ET-RFL-12C	ET-RFL-24C
Dimension	1000x740x550	1340x900x600	1340x900x1400
Voltage	220V/50Hz	220V/50Hz	220V/50Hz
Power	48W	60W	120W
Temperature	20~300C	20~300C	20~400C
Weight	70kg	135kg	250kg
	1 Deck 1 Plate	1 Deck 2Plate	2Deck 4 Plate



ET-RFL-36C



ET-RFL-39C



4 Deck 16 Tray Oven

Stainless Steel Standard Gas Oven

Model	ET-RFL-36C	ET-RFL-39C	
Dimension	1340x900x1800	1760x900x1800	380V,25Kw
Voltage	220V/50Hz	220V/50Hz	Specification: 16 trays, 4 layer
Power	180W	210W	Temperature Range:20-400
Temperature	20~400C	20~400C	Net Weight:275Kg
Weight	370kg	470kg	Chamber Size:1290x650mm
	3 Deck 6 Plate	3 Deck 9Plate	Dimensions:1440x940x670mm


ET-DFL-11C

ET-DFL-12C

ET-DFL-24C
Stainless Steel Standard Electric Oven

Model	ET-DFL-11C	ET-RFL-12C	ET-RFL-24C
Dimension	920x700x410	1200x880x520	1670x845x615
Voltage	220V/50Hz	220V/50Hz	220V, 380V/50Hz
Power	4.8KW	6.6KW	8.4KW
Temperature	20~300C	20~300C	20~400C
Weight	35kg	84kg	126kg
	1 Deck 1 Plate	1 Deck 2Plate	1Deck 3 Plate


ET-DFL-22C

ET-DFL-36C

ET-DFL-39C
Stainless Steel Standard Electric Oven

Model	ET-DFL-22C	ET-DFL-36C	ET-RFL-39C
Dimension	920x715x715	1200x850x1580	1620x880x1580
Voltage	220V/50Hz	380V/50Hz	380V/50Hz
Power	6.8KW	119.8KW	125.2KW
Temperature	20~300C	20~400C	20~300C
Weight	67kg	240kg	320kg
	2 Deck 2 Plate	3 Deck 6Plate	3 Deck 9 Plate


EC01C

EC01E

EC01F
Convection Oven

Model	EC01C	EC01E	EC01F
Dimension	670x650x470	880x800x595	880x800x595
Voltage	220V/50Hz	220V/50Hz	220V/50Hz
Power	4.5	6	4.5
Temperature	50~300C	50~350C	50~350C
Timer	120min	120min	120min


ET-DFL-01C

ET-DFL-8B

ET-DFL-10B
Electric Oven

Model	ET-DFL-01C	ET-DFL-8B	ET-DFL-10B
Dimension	720x700x450	750x610x450	850x630x450
Voltage	220V/380V	220V/50Hz	220V/380V
Power	3.2KW	3.2KW	3.2KW
Weight	32Kg	30Kg	40Kg


ET-AHO-3

ET-AHO-5

ET-AHO-8
Electric Convention Oven

Model	ET-AHO-3	ET-AHO-5	ET-AHO-8
Dimension	860x1170x500	860x1170x720	860x1170x1570
Voltage	220V/50Hz	3N 220V/50Hz	3N 220V/50Hz
Power	4.5KW	5KW	12KW
Yield	3 Pans	5 Pans	8 Pans
Weight	87kg	110kg	160kg


ET-EP1ST

ET-EP2PT

ET-KPO-X2
Electric Pizza Oven

Model	ET-EP1ST	ET-EP2pt	ET-KPO-X2
Voltage	220-240V	220-240V	220-240V
Weight	2	3	8.8
Power	0-350	0-350	0-350
Dimension	560x570x280	560x570x440	940x660x820


**ET-FJ-12C
ET-FJ-15C**

**ET-FJ-12C
ET-FJ-15C**
Fermentation Box

Model	ET-FJ-12C	ET-FJ-15C	ET-FJ-24C	ET-FJ-30C
Dimension	500x730x1590	500x730x1890	1010x730x1590	1010x730x1890
Voltage	220V/50Hz	220V/50Hz	220V/50Hz	220V/50Hz
Power	2.6KW	2.6KW	2.8KW	2.8KW
Specification	12 Plates	15 Plates	24 Plates	30 Plates
Output	20kg/h	25kg/h	40kg/h	50kg/h
Weight	36kg	40kg	70kg	83kg


ET-XZ-16

ET-XZ-32

ET-XZ-64
Rotatory Oven

Model	ET-XZ-16	ET-XZ-32	ET-XZ-64
Dimension	2150x1280x2350	2700x1700x2350	2500x2500x2500
Pan size	400x600 or 460x720	400x600 or 460x720	400x600
Voltage	380v	380v	380v
Gas power	2.1	3.3	4.8
Diesel power	2.1	3.3	4.8
Electric power	33	57	86
Specification	16 pans	16 pans x 2	16 pans x 4
N.W	1180	1950	3500
Trolley free	1	1	2
Material	S/S 430	S/S 430	S/S 430



ET-WCR-12



ET-WCR-18



ET-WDR-18



ET-WDR-12



ET-WDR-32

Electric conveyor pizza oven

Model	ET-WDR-12	ET-WCR-12	ET-WDR-18	ET-WCR-18	ET-WDR-32
Dimension	1100x570x370	1100x570x370	1100x570x370	1570x800x380	2500x1070x460
Voltage	220V/50Hz	220V/50Hz	3N-380V/50Hz	220V/50Hz	3N-380V/50Hz
Power	6.7KW	0.1KW	10.3KW	0.1KW	25.5KW
Temperature	50-350	0-400	50-350	0-400	50-350
Gas type	-	-	-	LPG/NG	-



**ET-FDD-400A
ET-FDD-450A
ET-FDD-520A**

Dough Sheeter

Model	ET-FDD-400A	ET-FDD-450A	ET-FDD-520A
Dimension	780x1700x590	820x1770x620	880x2080x620
Voltage	220V/380	220V/380	220V/380
Power	0.4KW	0.55KW	0.55KW
Roller clearance	1-35	1-35	1-35
Roller length	400x1600	430x1700	500x2000
Maximum weight	4	4	5
N.W	110	117	125


ET-SP520
Dough Sheeter

Model	ET-SP520
Voltage	220V/50Hz
Power	0.75
Roller length	520
Roller speed	133
Roller range	0~33
Dimension	2430x880x1230
Weight	240


ET-APD-30
Dough Rolling Machine

Model	ET-APD-30
Size	495x490x640
Volts	220V/50Hz
Power	370W
Width Roller	300mm
Dough weight	50-500g
Pizza Dia	10-30cm


ET-NFZ-380
Toast Moulder

Model	ET-NFZ-380
Voltage	220V/50Hz
Power	0.8/1.3
Specification	380
Dimension	900X700X1130


**ET-HY-31
ET-HY-44
ET-HY-50**
Bread Slicer

Model	ET-HY-31	ET-HY-44	ET-HY-50
Volts	220V/50Hz	220V/50Hz	220V/50Hz
Motor Power	0.37	0.37	0.37
Pcs/time	31	44	50
Thickness/pcs	1.2	0.8	0.7
Dimension	650x770x770	650x770x770	650x770x770
N.W	64	64	64



ET-150SD



**ET-FLF2150
ET-FLF3150**

Manual Noodle Making Machine

Model	ET-150SD	ET-FLF2150	ET-FLF3150
Procedures	Electroplating	Electroplating	Electroplating
Blade thickness	2.5 round & 4 & 9	2 & 4	2.5 round & 2 & 4
Roller width	150	150	150
Blade number	3	2	3
Dimension	180x210x155	240x200x160	240x200x160
Packing	4	6	6
N.W	3.1	2.7	3.2



ET-150-4-DD



**ET-150-4-FXZC
ET-180-4-FXZC**

Manual Noodle Making Machine

Model	ET-150-4-DD	ET-150-4-FXZC	ET-180-4-FXZC
Procedures	Electroplating	-	-
Knife width	2 and 4	2.5 and 4	2 and 4
Roller width	150	150	180
Dimension	240x270x285	240x270x285	445x270x285
N.W	9	9	11

Stainless steel bread slicer

Usage: Bread

Power Source: Electric

Voltage: 220V

Customized: Non-Customized

Specification:

68*78*78/78*78*78



Product: **FOOD
PROCESSING
EQUIPMENT**





ET-220ST



ET-250ST



ET-275ST



ET-300ST

Semi-automatic Meat Slicer

Model	ET-220ST	ET-250ST	ET-275ST	ET-300ST
Dimension	520x460x380	520x460x380	575x460x395	630x530x460
Volts	220V/50Hz	220V/50Hz	220V/50Hz	220V/50Hz
Power	0.15HP/120W	0.2HP/150W	0.25HP/200W	1/3HP/250W
Blade dia	220mm	250mm	275mm	300mm
Cutting thickness	0-11mm	0-11mm	0-14mm	0-14mm
G.W/N.W	15.8/13.3kg	16.5/13kg	17.5/16kg	26.7/24kg



ET-QS806



ET-QS803

Full Stainless steel universal fritter

Model	ET-QS806	ET-QS803
Dimension	425x365x560	500x460x690
Voltage	110/220V	110/220V
Power	550W	750W
Capacity	6L	17L
N.W	22kgs	34kgs
G.W	23kgs	38.5kgs

Automatic Meat Slicer


Model	ET-SL300B
Dimension	640X600X750
Voltage	110/220V
Slicing motor power	420W
Reciprocating motor power	300W
Blade dia	300
Cutting thickness	0-15mm
Slicing speed	37times/min
Weight	68kg
Size	12"


ET-JR5I

ET-JR10S

ETJR10A
Manual Meat Grinder

Model	ET-JR10I	ET-JR10S	ET-JR10A
Dimension	57.5x37.5x30.5	38.5x35x29.5	57x39x29
Material	Tin plated	s/s	Aluminium
Net weight	1.5	3.5	1.15
Packing item	10	6	10


 ET-TK-8
(Electroplating head)

 ET-TK-12
(Stainless steel head)

 ET-TK-12S
(Stainless steel head)

Meat Grinder

Model	ET-TK-8	ET-TK-12	ET-TK-12S
Dimension	360x245x385	400x218x412	400x215x412
Voltage	220V	110/220v	110/220v
Power	250W	750W	750W
Capacity	80kg/h	150kg/h	150kg/h
G.W	13kg	27kg	27kg
Surface Treatment	Spray painted	Spray painted	Spray painted


ET-TK-22
(Electroplating head)

ET-TK-22A
Electroplating steel head)

ET-TK-32A
(Stainless steel head)

Meat Grinder

Model	ET-TK-22	ET-TK-22A	ET-TK-32A
Dimension	430X190X470	430X190X470	515x232x555
Voltage	110/220/380V	110/220/380v	110/380V
Power	850W	850W	1500W
Capacity	150kg/h	150kg/h	500kg/h
G.W	33kg	33kg	61kg
Surface Treatment	Spray painted	Spray painted	Spray painted


Potato Peeling Machine

Model	ET-X10C	ET-X10C	ET-X30C
Power	550W	550W	1500W
Voltage	110/220/230V	110/220/230V	110/220/230/380V
Frequency	50/60Hz	50/60Hz	50/60Hz
Capacity	8kg	15kg	30kg
Efficiency	240-480Kg/h	480-900Kg/h	1080-2160Kg/h
Packing size	510x510x900	580x580x950	660x640x1110
Weight	52Kg	50Kg	70Kg


Potato Peeling Machine

Model	ET-HLP-15	ET-HLP-20
Power	750W	950W
Voltage	220/50Hz	220/50Hz
Capacity/h	165kg/h	190kg/h
Timer	0-5	0-5
N.W	58.4kg	65kg
Capacity	20.6L	27L
Packing size	476x646x1243	536x676x1273



ET-j210



ET-RFL-12C



ET-RFL-12C



ET-RFL-12C



ET-RFL-12C

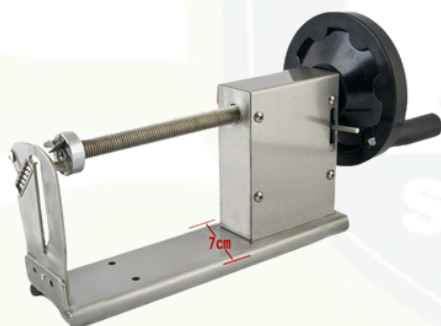
Bone Sawing Machine

Model	ET-J210	ET-J310	ET-210A	ET-300A	ET-250
Machine size	520X470X820	590X570X1040	460X500X700	935X770X1710	425X420X1500
Voltage	220V/50Hz	220V/50Hz	220V/50Hz	220V/50Hz	220V/50Hz
Power	650W	1100W	850W	1500W	650W
Cutting thickness	5-155MM	5-180MM	4-180MM	30-250MM	4-210MM
Rotation speed	1420r/min	1420r/min	15m/s	15m/s	15m/s
Thickness of the saw	0.5mm	0.5mm	0.5mm	0.5mm	0.5mm
Table specification	500X380mm	560X425mm	400X436mm	712X662mm	465X596mm
Weight	41kg	70kg	45kg	143kg	50kg


ET-VC60MS

ET-VC65MS
Vegetable Cutter

Model	ET-VC60MS	ET-VC65MS
Power	550W	750W
Voltage	220/50Hz or 110V/60Hz	220/50Hz or 110V/60Hz
Dimension	660x315x545mm	665x325x545mm
N.W	25kg/29kg	25kg/28kg
Attachment	with 5 kinds of blade	with 5 kinds of blade
Grater Discs	3/4.5/7mm	3/4.5/7mm
Slicer Discs	2/4mm	2/4mm
Remark	Semi-circle hopper+s/s bottom base	Round hopper+s/s bottom base


PT-002
Manual potato cutter

Item no	PT-002
Dimension	470x390x380
Output	10 second/pcs
N.W	1.8kg
Packing	330x170x120
Function	1.spiral potato chips 2. Curly fries 3. Twist hot dog



**Equipped with 3/8" knife
1/2" is optional**

Easy Chopper

Item no:	MX-104
Material:	Stainless steel wire, aluminium body
Pusher assembly available equipped with stainless steel blades that stay super sharp and taut and the metal construction holds up to the heaviest duty.	
Overall dimensions:	
Length:	10", Width: 10", Height: 20 1/2



Equipped with 3/8" blade,
1/4 and 1/2" optional



Equipped with 3/8" blade,
1/4 and 1/2" optional



Equipped with 1x1" blade,
1x1/2 are optional

New Styles French Fry Cutter

Item NO: MX-PH-001

Can be mounted on the wall, easily
cutting potatoes, most labor saving
styles

Capacity: 300kgs/day

Material: stainless steel blade, cast
aluminum body, cast iron handle

Overall dimension: Width 20 inches,
Depth 9 inches, Height 10 inches

Manual French Fry Cutter

Item NO: MX-003-2

Material: Cast iron body
stainless steel blade

Packing: 2pcs/ctn

Ctn G/N.W: 15.4/14.8KGS

Ctn size: 510x400x260

Lettuce Cutter

Item NO: MX-002-2

Dimensions: Length: 18"

Width: 13" Height: 20"

Material: Cast aluminium body

Material: Cast aluminium body

Stainless steel blade



Stainless Steel Spice Grinding Machine

Model Name/Number: SGM001

Material: Stainless Steel

Usage/Application: Grinding

Dehydrator

Capacity: 50 Kg

Material: Stainless Steel

Number of Trays: 24

Automation Grade: Fully Automatic

Tray Size: 30x30 cm

Machine Power: 5 Kw

Grid Spacing: 3.5 cm





Dehydrator (10 Trays).



Dehydrator (12 Trays).



Dehydrator (16 Trays).



Dehydrator (24 Trays)



Dehydrator (32 Trays)



Sausage Filling Machine



Herbs Grinder 250g



Herbs Grinder 1500g



Herbs Grinder 2000g



Herbs Grinder 2500g



Herbs Grinder 3000g

Since 1987

A.F.E.S.S.

Stainless Steel Spice Grinding Machine

Product Model: JKH-150

Mould Size: 6 x 1.6 in / 150 x 40 mm

Max. Thickness: 0.98 in / 25 mm

Load Capacity; 0.55 lbs / 0.25 kg

Material: Aluminum Alloy + 304 Stainless Steel

Net Weight: 13.2 lbs / 6 kg

Product Size: 11 x 8.3 x 11.4 in / 280 x 210 x 290 mm

Package Dimension: 12.2 x 9.5 x 14.4 in / 310 x 242 x 365 mm



Corn Shelter

Processing Object: Corn

Screen Mesh: Without Screen Mesh

Condition: New

Applicable Materials Shape: Rodlike

Type: Corn thresher

Product: **COOKING
EQUIPMENT**



ET-TQ-4
ET-TQ-4E
ETT-TQ-4
ETT-TQ-4E



ET-TC-2
ET-TC-2E
ETT-TC-2
ETT-TC-2E

Name	Model	Power	Volts	Dimension
Gas Range with 4-Burner & Oven	ET-TQ-4	19kw	-	800x900x850+120
Gas Range with 4-Burner & Electric Oven	ET-TQ-4E	14+5kw	230V/380V	800x900x850+120
Gas Range with 4-Burner & Oven	ETT-TQ-4	19kw	-	700x750x850+60
Gas Range with 4-Burner & Oven	ETT-TQ-4E	14+5kw	230V/380V	700x750x850+60
Gas-2Tank Fryer (4-Basket) with Cabinet	ETT-TQ-4E	31kw	-	800x900x850+120
Electric 2Tank Fryer (4-Basket) with Cabinet	ET-TC-2	24kw	380V	800x900x850+120
Gas-2Tank Fryer (4-Basket) with Cabinet	ETT-TC-2	31kw	-	700x750x850+60
Electric 2Tank Fryer (4-Basket) with Cabinet	ETT-TC-2E	18kw	380V	700x750x850+60



ET-TG
ET-TGE
ETT-TG
ETT-TGE



ET-TH
ET-THE
ETT-TH
ETT-THE



ET-TM12
ET-TM12E
ETT-TM12
ETT-TM12E

Name	Model	Power	Volts	Dimension
Gas Griddle (2/3 Flat & 1/3 Grooved) with Cabinet	ET-TG	28kw	-	800x900x850+120
Electric Griddle (2/3 Flat & 1/3 Grooved) with Cabinet	ET-TGE	15kw	230V/380V	800x900x850+120
Gas Griddle (2/3 Flat & 1/3 Grooved) with Cabinet	ETT-TG	24kw	-	700x750x850+60
Electric Griddle (2/3 Flat & 1/3 Grooved) with Cabinet	ETT-TGE	9kw	230V/380V	700x750x850+60
Gas Lava Rock Grill with Cabinet	ET-TH	17kw	-	800x900x850+120
Electric Lava Roack Grill With Cabinet	ET-THE	12kw	380V	800x900x850+120
Gas Lava Rock Grill With Cabinet	ETT-TH	17kw	-	700x750x850+60
Electric Lava Rock Grill With Cabinet	ETT-THE	12kw	380V	700x750x850+60
Gas Pasta Cooker with Cabinet	ET-TM12	23.6kw	-	800x900x850+120
Electric Pasta Cooker with Cabinet	ET-TM12E	18kw	380v	800x900x850+120
Gas Psta Cooker eith Cabinet	ETT-TM12	20.6kw	-	700x750x850+60
Electric Pasta Cooker with Cabinet	ETT-TM12E	18kw	380v	700x750x850+60


ET-RB-1

ET-RB-2

ET-RB-4

ET-RB-6
Stove

Model	ET-RB-1	ET-RB-2	ET-RB-4	ET-RB-6
Dimension	550x460x550+60	300x770x360+60	600x770x360+60	900x770x360+60
Power (kw)	7.3	15	30	45
Net weight	23	20	23	58


EY-YP-1A1

EY-YP-1C1

ET-YP-2A1

ET-YP-2A2
Electric Contact Grill

Model	EY-YP-1A1	EY-YP-1C1	ET-YP-2A1	ET-YP-2A2
Dimension	370x305x190	430x370x190	565x370x190	565x370x190
Power (kw)	1.8	2.2	3.6	3.6
Volts	220V	220V	220V	220V
Net weight	13kg	18kg	26kg	26kg
Plate	Grooved	Grooved	Grooved	Flat+Grooved


EY-YP-1A4

EY-YP-1C4
Electric Contact Grill

Model	EY-YP-1A4	EY-YP-1C4
Dimension	370x305x190	430x370x190
Power (kw)	1.8	2.2
Volts	220V	220V
Net weight	13kg	18kg
Plate	Grooved	Grooved


Electric Fryer Single

Model	ET-FE-4L	ET-FE-6L	ET-FE-8L	ET-FE-11L
Dimension	217x400x320	425x265x285	265x430x345	435x400x345
Volts	220V/50Hz	220V/50Hz	220V/50Hz	220V/50Hz
Power (kw)	2KW	2.5KW	3.25KW	3.5KW
Capacity	4L/Tank	6L/Tank	8L/Tank	11L/Tank
Weight	5kg	5.8kg	6kg	8.6kg


Deep fryer ET-FE-12-2

EY-YP-1A4

Deep fryer double

Model	ET-FE-12-2	ET-904
Size	580x500x410	660x600x465
Volts	220V/50Hz	220V/50Hz
Power (kw)	3.25+3.25KW	4.5+4.5KW
Capacity	8+8L	12.5+12.5L
Weight	18KG	27.4KG


Electric Salamander

Model	ET-936	ET-937	ET-938
Dimension	640x315x300	798x418x450	578x388x360
Power	2KW	4KW	2.2KW
Volts	220V	220V	220V
N.W	13KG	28KG	19KG


ET-450

ET-600/ ET-800
Salamandar

Model	ET-450	ET-600	ET-800
Dimension	450x520x520	600x520x520	800x520x520
Volts	220V	220V	220V
Power (kw)	2.8KW	4KW	5.6KW
N.W	36KG	44KG	58KG


ET-FE-12-2

EY-YP-1A4
Gas Salamander

Model	ET-FE-12-2	ET-904
Size	580x500x410	660x600x465
Volts	220V/50Hz	220V/50Hz
Power (kw)	3.25+3.25KW	4.5+4.5KW
Capacity	8+8L	12.5+12.5L
Weight	18KG	27.4KG


ET-YP-2A2

ET-YP-2A2

ET-YP-2A2

ET-YP-2A2
Floor Type Fryer

Model	ET-26	ET-26-2	ET-74	ET-75
Dimension	420x770x930	880x770x930	590x520x980	590x520x930
Volts	380V/50Hz	380V/50Hz	GAS	GAS
Power (kw)	10.05KW	10.05+10.05KW	37.8KW	37.8KW
Capacity	26L	30+30L	27L	14+14L
Weight	18kg	11kg	31kg	31kg


Food Warmer Cart

Model	ET-YDH-11	ET-YDH-22
Dimension	780x960x1755	1540x930x1755
Volts	220V	220V
Power (kw)	2.6KW	2.6KW
Weight	130 kg	130 kg


ET-VGB-790

ET-VGB-791

ET-VGB-792
Shawarma

Model	ET-VGB-790	ET-VGB-791	ET-VGB-792
Dimension	500x650x900	500x650x1040	500x650x1200
Volts	220V/50Hz	220V/50Hz	220V/50Hz
Power (kw)	0.05KW	0.05KW	0.05KW
Weight	38KW	53KW	53KW


ET-VGB-790
Standing Shawarma

Power Source: Both

Usage/Application: Commercial Kitchen

Number Of Gas Burners: 2-8 Burners

Capacity: 3-25 Kgs

Meat Holding Capacity: 3-25 Kgs

Material: Stainless Steel


Double Standing Shawarma

Production Capacity: Max 25kg/time

Voltage: 220/380V

Power: 15400

Dimension(L*W*H): 580*630*800mm


ET-YXD-201

ET-YXD-206

ET-YXD-207

ET-YXD-266X

ET-YXD-268X
Floor Type Fryer

Name	Model	Dimension	Volts	Power	Weight
Electric Rotisserie	ET-YXD-201	1010x910x2140	380V/50Hz	2x9.7kw	35.3kg
Electric Chicken Rotisserie	ET-YXD-206	670x550x1580	220v	7kw	104kg
Gas Chicken Rotisserie	ET-YXD-207	670x550x1580	220v	1kw	99kg
Electric Rotisseries	ET-YXD-266X	810x600x640	220v	4.7kw	65kg
Electric Rotisseries	ET-YXD-268X	1010x600x800	220v	6.21kw	75kg


ET-KJL-3P
Gas Rotisserie

ET-KJL-6P

ET-KJL-6P

Model	ET-KJL-3P	ET-KJL-6P	ET-KJL-9P
Size	1180x490x710	1180x490x1250	1185x490x1880
Volts	220V	220V	220V
Power	10	20	30
Weight	60	85	115


ET-KF06

ET-KF05

Name	Model	Dimension	Volts	Power
Gas fumeless roaster (with Electric fan)	ET-KF06	640x400x275	220V/50Hz	16W
Gas fumeless roaster (with Electric fan)	ET-K05	640x400x275	220V/50Hz	-
Gas fumeless roaster (with Electric fan)	ET-KF03	1180x370x225	220V/50Hz	220V/50Hz


ET-K233 (Standard)
Name : Six head environmental roaster (Gas)

Model : ET-K23

Dimension: 800x400x180

Configuration: Sprayed shell, standard cover


Plate Warmer

Model	ET-FPW-1	ET-FPW-2
Dimension	420x460x930	420x800x930
Volts	220V	220V
Power (kw)	0.4KW	0.8KW
Weight	31kg	48kg


Stainless Steel Pressure Cooker

Model	ET-DYG-50	ET-DYG-50-F
Dimension	515x490x560	515x490x560
Capacity	51L	51L
Pressure	0.04MPa	0.04MPa


ET-PL-450
Electric Griddle

Model	ET-PL-600BP	ET-PL-600K
Size	600x600x340	600x600x340
Volts	380(220)V/50Hz	380(220)V/50Hz
Power	5.6KW	5.6KW
Weight	50KG	50KG
Plate type	1/2 Grooved	Grooved

ET-PLC-722
Gas Griddle

Model	ET-PLC-722
Size	730x550x380
Power	15.7KW
Weight	34KG
Plate type	1/2 Grooved



Hot dog roller

Brand: SYBO

Product Dimensions: 24"D x 13"W x 16"H

Special Feature: Manual

Color: OT-R3-8

Fuel Type: Electric



Stainless Steel Cooker

90×60 CMS

4 Gas Burners + 2 Elec Hotplates

Auto Ignition for Gas Oven

Classic Home Look

SS Top

Stainless Steel Finish

Double Glass Insulated Door



BBQ GRILL

Colour: Black

Material: Steel

Overall dimensions (with lid closed): 80 x 73 x 90 cm (W x D x H)

Overall dimensions (with lid open): 80 x 95 x 90 cm (W x D x H)

Cooking area size: 72 x 35.5 cm (L x W)

Warming rack size: 68 x 13 cm (L x W)

Cooking height from the ground: 70 cm



Inbuilt Oven



Inbuilt Oven



Hood

AFECO

Since 1987

A.F.E.S.S.

Product: REFRIGERATING EQUIPMENT





ET-FD-1.0L



ET-DD-1.0L



ET-DD-0.8L

Refrigerator Cabinet

Name	Four doors refrigerator cabinet	Double doors refrigerator cabinet	Four doors refrigerator cabinet
Model	ET-FD-1.0L	ET-DD-1.0L	ET-FD-1.0L
Unit Dimension	1220x780x2050	1220x780x2050	640x780x2050
Internal size	1100x630x1470	1100x630x1470	640x630x1470
Packing size	1320x880x2200	1320x880x2200	860x880x2200
Capacity	1020L	1020L	590L
Cabinet Temperature	0~10 or -5~-18C	0~10 or -5~-18C	0~10 or -5~-18C
Cooling Type	Fan cooling or static	Fan cooling or static	Fan cooling or static
Voltage	480W/730W	420W/620W	390W/490W
Power	220V/50Hz	220V/50Hz	220V/50Hz
Refrigerant	R134a/R404	R134a/R404	R134a/R404
Door material	Stainless steel or glass		Stainless steel or glass
N.W	161KG	161KG	108KG



ET-FD-150


 ET-FD-250
ET-FD-350
ET-FD-400

Ice Cube Maker

Model	ET-FD-150	ET-FD-250	ET-FD-350	ET-FD-400
Size	750x880x1250	750x880x1370	750x880x1420	750x880x1450
Voltage	220-240V	220-240V	220-240V	220-240V
Power	760W	1080W	1285W	1400W
Ice Cube size	23x23x23	23x23x23	23x23x23	23x23x23
Daily production	150kg24h	250kg24h	350kg24h	400kg24h
Ice storage capacity	250kgs	250kgs	250kgs	250kgs
Refrigerant	R404a/400g	R404a/450g	R404a/650g	R404a/700g
Cooling way	Air/water	Air/water	Air/water	Air/water
Compressor	Aspera	Aspera	Copeland	Aspera



ET-250F



ET-350F



ET-450F

Ice Maker

Model	ET-250F	ET-350F	ET-450F
Dimension	500x430x798	500x430x798	500x430x798
Voltage	220-240V	220-240V	220-240V
Frequency	50Hz/60Hz	50Hz/60Hz	50Hz/60Hz
Power	220W	240W	300W
Ice shape	Cube	Cube	Cube
Ice per cycle	32PCS	40PCS	45PCS
Way of adding water	Automatically	Automatically	Automatically
Refrigerant	R134a/115g	R134a/115g	R134a/115g
Ice making capacity	25KGS/24h	35KGS/24h	45KGS/24h
Ice storage capacity	19KGS	19KGS	19KGS



ET-BQL-808-1



ET-BQL-838



ET-BQL-G12D



ET-BQL-A22

Ice Cream Machine

Model	ET-BQL-808-1	ET-BQL-838
Dimension	518x740x780	518x740x1310
Power	1.7KW	1.7KW
Volts	220V/50Hz	220V/50Hz
Refrigerant	R22/R404A	R22/R404A
Output	18-25L/h	18-25L/h
Weight	108kg	135kg

Soft Ice Cream Machine

Model	ET-BQL-G12D	ET-BQL-A22
Dimension	518x740x1310	518x740x1310
Voltage	220V/110V	1.7KW
Power	220V/50Hz	220V/50Hz
Refrigerant	R22/R404A	R22/R404A
Production	11-16L/h	18-25L/h
Weight	140kg	135kg



ET-250F



ET-350F



ET-450F

Beverage Cooler

Model	Dimension	Volts	Power	N.W	Capacity	Refrigerant
ET-LG238A1	560x576x1835	220V	195W	92KG	238L	R134a
ET-LG898A2	Voltage	220V	400W	158KG	898L	R134a
ET-LG380A3	Frequency	220V	550W	206KG	1380L	R134a



ET-250F



ET-350F



ET-450F

Counter Top Cooler

Model	Dimension	Volts	Power	N.W	Capacity	Temperature
ET-TG-90	520x500x840	220V	78W	40KG	90L	2~10C
ET-TG-200M2	900x540x930	220V	98W	160KG	210L	2~10C
	1350x540x930	220V	110W	80KG	1330L	2~10C



ET-250F



ET-350F



ET-450F

Supermarket Showcase

Model	Dimension	Volts	Power	Temp	Shelf (adjustable)
ET-HG-20	2000x900x1980	220V	148W	2-10C	Four layer
ET-HG-20F	2000x1060x2100	220V	-	2-10C	Four-layer
ET-BG-20	2000x1060x1600	220V	-	2-10C	Three-layer



ET-RT-1200



ET-REA-1800



ET-RA2-2000



ET-HLB-1200

Cake Showcase

Model	Dimension	Volts	Power	N.W	Temp	Refrigerant
ET-RT-1200	1200x780x1280	220V	780W	140KG	4~8C	R22/R134a
ET--REA-1800	1800x740x1250	220V	1050W	200KG	4~8C	R22/R134a
ET-RA2-2000	2000x850x1250	220V	950W	230KG	4~8C	R22/R134a
RT-HLB-1200	1200x875x1500	220v	780w	150kg	4~8C	R22/R134a



Ice cream frying machine

Power Supply: 2800W

Pan Size: 50CM

Material: STAINLESS STEEL

Pan Thickness: 3MM

Usage/Application: FRIED ICE CREAM

Power: 1800W

Voltage: 110V/60Hz

Pan Diameter: 45 cm/17.7 inch

Refrigerant: R410A

Temperature: -30~+50°C/-22~122°F



Hard ice cream machine

Voltage: 220V/110V

Frequency: 50HZ/60HZ

Power: 1400W

Product size: 52.5*49*64cm

Net weight: 65KG



Mini Tabletop Soft Ice cream Machine

Power: 1100W

Main Compressor: 0.75HP

Refrigerant: R404A (Standard) / R448A (Option)

Voltage: 220V 50Hz/60Hz

Net Weight(kg): 67kg



Water Chiller

Material: Stainless Steel, Metal

Capacity: 6 Tons

Wattage: 18 KW

Power Source: Corded Electric

Product Dimensions: 53.1 x 27.6 x 54.3



Linder Bar Chiller

Type Of Freezer: Chest Type

Body Material: Stainless Steel

Base Clearance: 4 Inch

Number of Shelves: 3

Cake Rotary Cake

Model Number: np520

Power (W): 350w

Rotating speed: 0-300rpm

Size: 55*40*49cm

Weight: 20kg



Popsicle Machine



Salad Bar



Open Chiller



3ft Open Chiller





Product: **BEVERAGE
SERIES
EQUIPMENT**





ET-400A



ET-400G



ET-300CD

Ice Crusher

Model	ET-400A	ET-400G	ET-300CD
Dimension	160x400x290	160x400x290	160x400x290
Voltage	220V/110v	220V/110v	220V/110v
Power	200W	300W	300W
Rotation Speed	1450R/M	1450R/M	1450R/M
Output	65kgs/h	65kgs/h	80kgs/h
Weight	5.5KG	5.5KG	6KG



ET-768A



ET-787



ET-787A



ET-968

Blender

Model	ET-768A	ET-787	ET-768A	ET-768A
Dimension	234x199x510	234x199x510	234x199x510	234x199x550
Voltage	220V/110v	220V/110v	220V/110v	220V/110v
Power	1.5KW	1.39KW	1.39KW	1.8KW
Rotation Speed	12000-26000R/M	12000-26000R/M	12000-26000R/M	12000-26000R/M
Capacity	2.0L	2.0L	2.0L	2.7L
Output	80cup/h	80cup/h	80cup/h	90cup/h
Weight	4.3KG	4.3KG	4.3KG	5.3KG



ET-BL-015



ET-EMS-1



ET-EMS-2

Milk mixer/ Milk shake machine

Model	ET-BL-015	ET-EMS-1	ET-EMS-2
Dimension	240x225x520	170x170x520	350x170x520
Voltage	220V/50Hz	220V/50Hz	220V/50Hz
Power	0.3KW	80W	160W
N.W/G.W	4/5kgs	3.5/4KG	6.5/7KGS
Capacity	0.9L	1L	1+1L



ET-ND1000



ET-ND2002

Stainless steel Coffee Machine

Model	ET-ND1000	ET-ND2002
Dimension	215x385x460	430x410x520
Voltage	250V/50Hz	250V/50Hz
Power	1.4KW/2KW	3.3KW
Capacity	1.6L	2L



ET-ND1000



ET-ND2002

Juice Dispenser

Model	ET-LSJ-10Lx2	ET-LSJ-10Lx3	ET-LSJ-10Lx4	ET-LSP-10Lx2	ET-LSP-10Lx3
Dimension	330x450x670	410x450x670	540x450x670	330x450x670	410x450x670
Voltage	220V/50Hz	220V/50Hz	220V/50Hz	220V/50Hz	220V/50Hz
Power	280W	320W	380W	280W	320W
Temperature	7-12C	7-12C	7-12C	7-12C	7-12C
Refrigerant	R134A	R134A	R134A	R134A	R134A
N.W/G.W	22/24KG	27/30KG	30/36KG	24/26KG	30/32KG
Capacity	10Lx2	10Lx3	10Lx4	10Lx2	10Lx3
Type	Pedal	Pedal	Pedal	Spray	Spray



ET-A2000



ET-A3000

Juice Extractor

Model	ET-A2000	ET-A3000
Dimension	430x350x450	340x270x360
Voltage	220V/50Hz	220V/50Hz
Power	550W	370W
N.W/G.W	19/20kg	12/13kg
Speed	2800r/min	2800r/min
Output	100-120kgs/h	80-100kgs/h



ET-B2000



ET-B3000

Juice Extractor

Model	ET-B2000	ET-A3000
Dimension	430x350x450	340x270x360
Voltage	220V/50Hz	220V/50Hz
Power	550W	370W
N.W/G.W	19/21kg	12/14kg
Speed	2800r/min	2800r/min
Output	100-120kgs/h	80-100kgs/h



ET-MM-200



ET-2000E-1



ET-2000E-3

Juice Extractor

Juice Extractor

Model	ET-2000E-1	ET-2000E-2
Dimension	400x330x780	400x300x770
Voltage	220V/50Hz	220V/50Hz
Power	120W	120W
N.W/G.W	40-80mm	40-80mm
Size of orange	20pcs/min	20pcs/min
Output	40-50%	40-50%
Yield	50kg	40kg
Weight		



ET-XRJ-12x2



ET-XRJ-12x3

Slush Dispenser

Model	ET-XRJ-12x2	ET-XRJ-12x3
Dimension	430x510x770	610x510x770
Voltage	250V/50Hz	250V/50Hz
Power	500W	600W
Temperature	-2C~-3C	-2C~-3C
Capacity	12Lx2	12Lx3
N.W/G.W	44/55KG	63/78KG
Refrigerant	R404	R404



ET-XRJ10L-1



ET-XRJ10L-2



ET-XRJ10L-2

Slush Dispenser

Model	ET-XRJ10L-1	ET-XRJ15L x 2	ET-XRJ10L-1
Dimension	290x560x760	420x560x760	290x560x760
Voltage	250V/50Hz	250V/50Hz	250V/50Hz
Power	300W	400W	300W
Temperature	-2C~-3C	-2C~-3C	-2C~-3C
Capacity	10Lx1	10Lx1	10Lx1
N.W/G.W	29/40KG	41/55KG	58/74KG
Refrigerant	R134A	R134A	R134A

Hot Water Boiler


Description	MODEL	CAPACITY	VOLTS	VOLTS	DIMENSION	WEIGHT
Double layer (liner S/S202 or 304)	AG-11LE	11L	220V/50Hz	950W	245x245x430	3kg
	AG-12LE	12L	220V/50Hz	950W	245x245x450	3.3kg
	AG-15LE	15L	220V/50Hz	1500W	330x330x530	3.5kg
	AG-20LE	20L	220V/50Hz	1500W	330x330x580	4kg
	AG-30LE	30L	220V/50Hz	2000W	365x365x580	4.5kg
	AG-35LE	35L	220V/50Hz	2000W	365x365x630	6kg

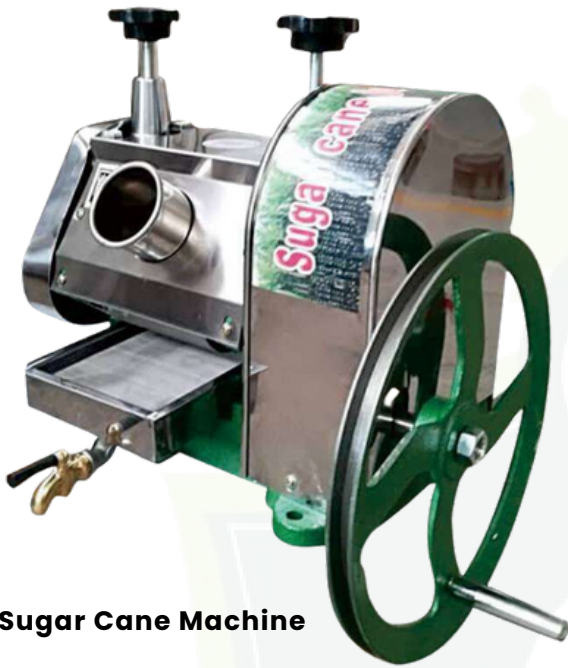
Hot Water Boiler


Description	MODEL	CAPACITY	VOLTS	VOLTS	DIMENSION	WEIGHT
Double layer (liner S/S202 or 304)	AG-11LE2	11L	220V/50Hz	1500W	245x245x430	3kg
	AG-12LE2	12L	220V/50Hz	1500W	245x245x450	3.3kg
	AG-15LE2	15L	220V/50Hz	1500W	330x330x530	3.5kg
	AG-20LE2	20L	220V/50Hz	1500W	330x330x580	4kg
	AG-30LE2	30L	220V/50Hz	2500W	365x365x580	4.5kg
	AG-35LE2	35L	220V/50Hz	2500W	365x365x630	6kg

Hot Water Boiler


Description	MODEL	CAPACITY	VOLTS	VOLTS	DIMENSION	WEIGHT
Double layer (liner S/S202 or 304)	AG-18	22L	220V/50Hz	2000W	310x310x520	3kg
	AG-22	28L	220V/50Hz	2000W	310x310x560	3.3kg
	AG-28	32L	220V/50Hz	2000W	330x330x560	3.5kg
	AG-32	38L	220V/50Hz	2000W	330x330x640	4kg
	AG-38	48L	220V/50Hz	2500W	430x430x490	4.5kg
	AG-48	52L	220V/50Hz	2500W	430x430x530	6kg
	AG-52	58L	220V/50Hz	2500W	430x430x570	

AG-58



Sugar Cane Machine

A.F.E.S.S

Product: **SNACK EQUIPMENT**





ET-MF01-(520)



ET-MF01 (720)



ET-MF01 (720)

Electric Candy Floss Machine

Model	ET-MF01-(520)	ET-MF01-(720)	ET-MF05-(520)
Size	520x520x500	720x720x500	520x750x910
Voltage	220V/110Hz	220V/110Hz	220V/110Hz
Power	1080W	1080W	1080W
Output	One unit/30c	One unit/30c	One unit/30c



ET-POP6A-R(Luxury)



ET-POP6A-D



ET-POP16A-2 (Luxury)

Popcorn Machine With Stainless Steel Pot

Model	ET-POP6A-R(Luxury)
Size	560x417x770
Voltage	220V/110Hz
Power	1.35KW
Output	1 Tray/2 min

Popcorn Machine

Model	ET-POP6A-D	ET-POP6A-D
Size	900x420x760	900x420x760
Voltage	220V/110Hz	220V/110Hz
Power	1.7KW	1.7KW
Output	1 Tray/2 min	1 Tray/2 min



Popcorn Machine Cart
Mode: ET-POP6C
Dimension : 940x500x825


Gas Popcorn Machine



ET-DZ-6



ET-DZ-6AR



ET-DZ-6E



ET-HF-2205

Name	Aberdeen Machine Egg	Gas Aberdeen Machine Egg	Electric Aberdeen Machine Egg	Rotating Waffle Maker
Model	ET-DZ-6	ET-DZ-6AR	ET-DZ-6E	ET-HF-2205
Dimension	225x420x290	220x420x210	320x450x280	250x490x300
Volts	220V/50Hz		220V/50Hz	220V/50Hz
Power	1.4KW	LPG	1.4KW	1.3KW
Weight	6kg	5.5Kg	7kg	7.5kg



ET-HF-2



ET-HF-1A

Waffle Baker

Model	2-Plate Waffle Baker	1-Plate Waffle Baker
Power	ET-HF-2	ET-HF-1A
Dimension	500x360x260	305x455x290
Volts	220~230V/50Hz	220V~230V/50Hz
Power	2.4KW	2KW
Weight	11.4Kg	28Kg



Name	1-Plate Cone Baker
Model	ET-xp-1
Dimension	360x252x230
Volts	220~230V/50Hz
Power	1KW
Weight	7Kg



ET-SB-6000



ET-SB-6000S

Kettle Cooker Warmer

Model	ET-SB-6000	ET-SB-6000S
Dimension	360x360x390	340x340x395
Voltage	230V/50Hz	230V/50Hz
Power	400W	400W
N.W/G.W	4.7KG/5.8KG	4.7KG/5.8KG
Capacity	10L	10L



ET-33/4

Chocolate Fountain

Model	SBL-802	SBL-802A	ET-33/4
Power	170W	180W	33cmxH60cm
Gift box size	230x220x410	230x230x470	220V/110V
Carton size	470x460x430 (4pcs)	470x470x485 (4pcs)	230W+10%
N.W/G.W	6.5/7.5KG	10/11KG	0-110C
Loading (20/40HQ)	1560/3700pcs	960/2500pcs	6KG


Chin chin cutter

ChinChin & Pasta Cutter

Manually operated

Detachable motor

Hand crank function

Material: Stainless steel


Donut Maker

Capacity: 500g-800g

Control: Automatic

Housing Material: Plastic

Heating Method: Single Heat Pipe

Driving Motor: DC Motor


Bread Toaster

Slot Number: 2-3

Housing: Stainless Steel

Baking Rack: Bun Warmer

Capacity: 2 Slices

Dust Cap: With Dust Cap

Crepe Maker Single

Model : ET-BJ-1 (Electric)

ET-RBJ-1 (Gas)

Dimension : 450x510x235mm

450x510x235mm

Volts : 220V/50Hz

/

Power : 2Kw

/

Weight : 17kg

17kg

Crepe Maker Double

ET-BJ-2 (Gas)

ET-RBJ-2 (Gas)

860x530x235mm

860x530x235mm

220V/50Hz

/

6Kw

/

42kg

42kg

Product: **PACKING SERIES
EQUIPMENT**





ET-H2



ET-Q9

Name	Cup cup happy fully auto sealing machine	Stainless steel fully auto sealing machine
Model	ET-H2	ET-Q9
Dimension	250x340x550	282x370x540
Volts	220V/50Hz	220V/50Hz
Power	360W	360W
Output	300~500cup/h	300~400cup/h



ET-D1

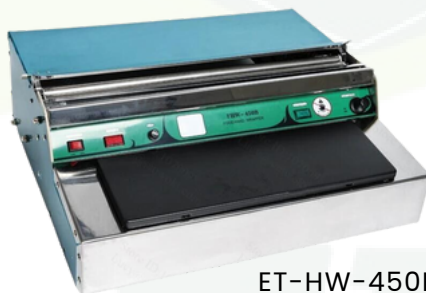


ET-B9

Name	Cup cup happy fully auto sealing machine	Stainless steel fully auto sealing machine
Model	ET-D1	ET-B9
Dimension	205x265x460	270x260x480
Volts	220V/50Hz	220V/50Hz
Power	300W	315W
Output	300~400cup/h	300~400cup/h



ET-HW-450A



ET-HW-450B

Wrapping Machine

Model	ET-HW-450A	ET-HW-450B
Dimension	620x500x140	620x500x140
Volts	220V/50Hz	220V/50Hz
Power	230W	230W
Weight	6.5KG	6.5KG


Hot Code Printer

Model	ET-DY-8
Size	240x240x140
Volts	220V/50Hz
Power	60W
Output	10-80pcs/min
Weight	3KG


Impulse Sealer

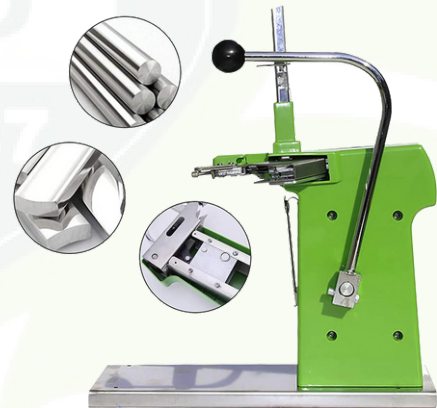
Model	Sealing Length	Shell Material	Size	Power	Weight
ET-PFS-100A	100mm	Aluminium	200x72x140	150W	1.31KG
ET-PFS-100A	200mm	Aluminium	320x80x150	300W	2.24KG
ET-PFS-100A	300mm	Aluminium	450x85x180	400W	3.70KG
ET-PFS-100A	400mm	Aluminium	550x85x180	500W	4.08KG
ET-PFS-100A	100mm	Plastic	200x72x140	150W	1.34KG
ET-PFS-100A	200mm	Plastic	320x80x150	300W	1.35KG
ET-PFS-100A	300mm	Plastic	450x85x180	400W	1.58KG
ET-PFS-100A	400mm	Plastic	550x85x180	500W	1.70KG
ET-PFS-100A	200mm	Iron	320x80x150	300W	1.78KG
ET-PFS-100	300mm	Iron	450x85x180	400W	2.33KG
ET-PFS-100A	400mm	Iron	550x85x180	500W	3.65KG



TD-C



TD-A


Wrapping Machine

Model	TD-C	TD-A
Dimension	Manual	Manual
Volts	220x75x150	240x95x150
Power	2kg	2kg

Bag Neck Sealer

Model	TD-711
Size	400x140x340
Weight	7.2kg



ET-2500


Automatic Vacuum Sealer

Model	ET-2500
Size	465x300x200
Volts	220V/110V
Power	127W
Sealing length	290mm
Sealing time	8s
Weight	3Kg
Function	Vacuum, Seal, Ca

Vacuum Bag

Material	PA+PE
Approval	BPA free, LFGB, FDA
Thickness	80-85 Micron
Bag size	15cm*5m/6"*16'
	20cm*5m/8"*16'
	22cm*10m/9"*33'
	25cm*5m/10"*16'
	28cm*10m/11"*33'



ET-DZ500A



ET-DZ400A

Single Chamber Vacuum packing Machine

Model	ET-DZ-500A	ET-DZ-400/2D
Size	650x580x550	480x540x980
Volts	220V	220V
Power	850W	950W
Vacuum	1KPa	1KPa
Chamber size	500x350x130	440x420x130
Capacity	2-3times/min	2-3times/min
Sealing length	500x13mm	400x13mm
N.W	90kgs	110kgs


Foot stamping sealer

Model	FRE300/400/500/600/700
Voltage	220V
Power	400W
Sealing length	300mm
Sealing width	2mm
Heat time	0.2-1.5S


Continuous band sealer (Steel wheel printing)

Model	DBF-900
Voltage	220V
Power	500W
Sealing width	5-12mm
Temperature range	0-300C
Max conveyor loading	5KGS

Product: **BUFFET & DISPLAY EQUIPMENT**





ET-TL711



ET-TL731



ET-TL731

Name	Oblong roll top chafing dish	Oblong roll top chafing dish	Oblong chafing dish
Model	ET-TL711	ET-TL731	ET-TL310
Dimension	650x480x450	650x495x440	640x350x410
Packing size	730x490x340	750x500x330	650x360x430
Remark	Stand with hollow steel legs W/GN1/1 Food pan, 9.0L Detachable lid; For quick & easy cleaning Stays open at 90 & 180 Stackable design Heat source option; Electrical warmer	W/GN1/1 Food pan, 9.0L Detachable lid; For quick & easy cleaning Stays open at 90 & 180 Stackable design Heat source option; Induction cooker/ Electrical warmer	W/GN1/1 Food pan, 9.0L



ET-TL711



ET-TL731



ET-TL731

Name	Oblong roll top chafing dish	Oblong chafing dish	Full size hinged chafing dish
Model	ET-TL351	ET-TL351	ET-TL343
Dimension	640x350x320	640x350x320	640x350x330
Packing size	650x360x240	650x360x240	650x360x350
Remark	W/GN1/1 Food pan, 9.0L	W/GN1/1 Food pan, 9.0L	W/GN1/1 Food pan, 9.0L



ET-TL711



ET-TL212



ET-TL741



ET-TL802

Name	Round hydraulic chafing dish	Round top chafing dish	Round roll top chafing dish	Round chafing dish 8.0L
Model	ET-TL212	ET-TL212	ET-TL741	ET-TL802
Dimension	520x455x345	520x455x345	475x520x465	480x360x300
Packing size	525x460x365	525x460x365	530x495x350	400x380x250
Remark	W/Glass windowed lid Optional 360mm Food pan, 6.0L Matching stand: TL211K	W/Glass windowed lid Optional 360mm Food pan, 6.0L Matching stand: TL211K	W/360mm Food pan, 6.0L Detachable lid; For quick & easy cleaning Stays open at 90 & 180 Stackable design Heat source option; Electrical warmer	


Pizza Warmer

Model NO: LD-203

Voltage: 220V

Power: 700W

N/W: 45.6kg

Specification: 675*550*810



ET-DH-2P



ET-DH-2P



ET-LD-601



ET-LD-602/ET-LD-603

Warming Showcase

Model	ET-DH-2P	ET-DH-3P	ET-LD-601	ET-LD-603
Dimension	380x460x600	950x460x600	600x485x645	1200x490x645
Volts	220V/50Hz	220V/50Hz	220V/50Hz	220V/50Hz
Power (kw)	0.89kw	1.4KW	1.94KW	2KW
Net weight	21/26kg	29/34Kg	29/35kg	551/59KG



ET-DH-13 (Golden)



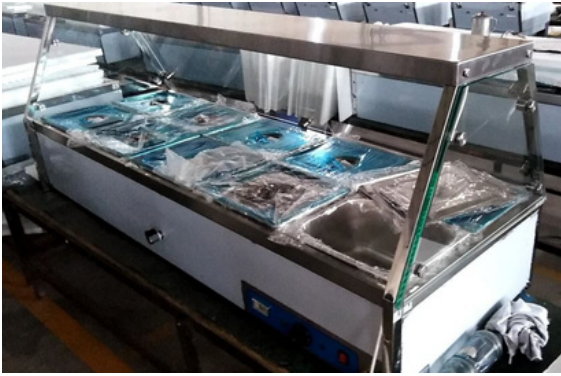
ET-DH-14 (Golden)

Warming Showcase

Model	ET-DH-13 (Golden/Silver)	ET-DH-3P
Dimension	380x400x745	457x518x825
Volts	220V	220V
Power (kw)	900w	1.200KW
Net weight	26kg	29Kg



Bain Marie



Bain Marie

Product:

SUPERMARKET EQUIPMENT





Shopping Basket



60L Trolley



80L Trolley



100L Trolley



200L Trolley



Display fridge



Grey color cash out table



Red color cash out table



Double face Cash out Table



Cash Drawer



Insect killer



POS Computer



Barcode Scanner



Scale



Scale



Wire rack



Spice rack



Rack

Product:

STAINLESS STEEL EQUIPMENT



STAINLESS STEEL
GN CONTAINER

GN 1/1

Model	Spec. (mm)	Thickness	Size(mm)
1011L	1/1 cover	0.7	530x325
1011020	1/1x20	0.6	530x325x20
1011040	1/1x40	0.6	530x325x40
1011065	1/1x65	0.6	530x325x65
1011100	1/1x100	0.6	530x325x100
1011150	1/1x150	0.7	530x325x150
1011200	1/1x200	0.7	530x325x200

GN 2/3

Model	Spec. (mm)	Thickness	Size(mm)
1012L	1/2 cover	0.7	530x325
1012020	1/2x20	0.6	530x325x20
1012040	1/2x40	0.6	530x325x40
1012065	1/2x65	0.6	530x325x65
1012100	1/2x100	0.6	530x325x100
1012150	1/2x150	0.7	530x325x150
1012200	1/2x200	0.7	530x325x200

GN 1/2

Model	Spec. (mm)	Thickness	Size(mm)
1012L	1/2 cover	0.7	325x265
1012020	1/2x20	0.6	325x265x20
1012040	1/2x40	0.6	325x265x40
1012065	1/2x65	0.6	325x265x65
1012100	1/2x100	0.6	325x265x100
1012150	1/2x150	0.7	325x265x150
1012200	1/2x200	0.7	325x265x200

GN 1/3

Model	Spec. (mm)	Thickness	Size(mm)
1013L	1/3 cover	0.7	325x176
1013020	1/3x20	0.6	325x176x20
1013040	1/3x40	0.6	325x176x40
1013065	1/3x65	0.6	325x176x65
1013100	1/3x100	0.6	325x176x100
1013150	1/3x150	0.7	325x176x150

GN 1/4

Model	Spec. (mm)	Thickness	Size(mm)
1014L	1/4 cover	0.7	265x162
1014040	1/1x40	0.6	265x162x40
1014065	1/1x65	0.6	265x162x65
1014100	1/1x100	0.6	265x162x100
1014150	1/1x150	0.7	265x162x150

GN 1/6

Model	Spec. (mm)	Thickness	Size(mm)
1016L	1/4 cover	0.7	176x162
1016065	1/1x40	0.6	176x162x65
1016100	1/1x65	0.6	176x162x100
1016150	1/1x100	0.7	265x162x100 265x162x150

GN 1/9

Model	Spec. (mm)	Thickness	Size(mm)
1019L	1/9 cover	0.7	325x265
1019065	1/9x65	0.6	325x265x20
1019100	1/9x100	0.6	325x265x40

**With back splash work table**

#1.2MM. 430S/S top shelf with 2" rear edge up galvanized under shelf and hat channel, Galvanized leg and socket, Plastic bullet foot, carton packing.

Item No.	Size(mm)	Back splash	Item No.	Size(mm)	Back splash
WT-2424-EB	600X600	2"	WT-3030-EB	700X700	2"
WT-2436-EB	600X900	2"	WT-3036-EB	700X900	2"
WT-2448-EB	600X1200	2"	WT-3048-EB	700X1200	2"
WT-2460-EB	600X1500	2"	WT-3060-EB	700X1500	2"
WT-2472-EB	600X1800	2"	WT-3072-EB	700X1800	2"
WT-2484-EB	600X2100	2"	WT-3084-EB	700X2100	2"
WT-2496-EB	600X2400	2"	WT-3096-EB	700X2400	2"
WT-24108-EB	600X2700	2"	WT-30108-EB	700X2700	2"
WT-24120-EB	600X3000	2"	WT-30120-EB	700X3000	2"

With back splash work table

#1.2MM. 430S/S top shelf with 4" rear edge up galvanized and hat channel, Galvanized leg and socket, Plastic bullet foot, carton packing.

Item No.	Size(mm)	Back splash	Item No.	Size(mm)	Back splash
WT-2424-EB	600X600	4"	WT-3030-EB	700X700	4"
WT-2436-EB	600X900	4"	WT-3036-EB	700X900	4"
WT-2448-EB	600X1200	4"	WT-3048-EB	700X1200	4"
WT-2460-EB	600X1500	4"	WT-3060-EB	700X1500	4"
WT-2472-EB	600X1800	4"	WT-3072-EB	700X1800	4"
WT-2484-EB	600X2100	4"	WT-3084-EB	700X2100	4"
WT-2496-EB	600X2400	4"	WT-3096-EB	700X2400	4"
WT-24108-EB	600X2700	4"	WT-30108-EB	700X2700	4"
WT-24120-EB	600X3000	4"	WT-30120-EB	700X3000	4"

**With back splash work table**

#1.2MM. 304S/S top shelf with 2" rear edge up galvanized under shelf and hat channel, Galvanized leg and socket, Plastic bullet foot, carton packing.

Item No.	Size(mm)	Back splash	Item No.	Size(mm)	Back splash
WT-2424-SB	600X600	2"	WT-3030-SB	700X700	2"
WT-2436-SB	600X900	2"	WT-3036-SB	700X900	2"
WT-2448-SB	600X1200	2"	WT-3048-SB	700X1200	2"
WT-2460-SB	600X1500	2"	WT-3060-SB	700X1500	2"
WT-2472-SB	600X1800	2"	WT-3072-SB	700X1800	2"
WT-2484-SB	600X2100	2"	WT-3084-SB	700X2100	2"
WT-2496-SB	600X2400	2"	WT-3096-SB	700X2400	2"
WT-24108-SB	600X2700	2"	WT-30108-SB	700X2700	2"
WT-24120-SB	600X3000	2"	WT-30120-SB	700X3000	2"

With back splash work table

#1.2MM. 430S/S top shelf with 4" rear edge up galvanized and hat channel, Galvanized leg and socket, Plastic bullet foot, carton packing.

Item No.	Size(mm)	Back splash	Item No.	Size(mm)	Back splash
WT-2424-SB-4	600X600	4"	WT-3030-SB-4	700X700	4"
WT-2436-SB-4	600X900	4"	WT-3036-SB-4	700X900	4"
WT-2448-SB-4	600X1200	4"	WT-3048-SB-4	700X1200	4"
WT-2460-SB-4	600X1500	4"	WT-3060-SB-4	700X1500	4"
WT-2472-SB-4	600X1800	4"	WT-3072-SB-4	700X1800	4"
WT-2484-SB-4	600X2100	4"	WT-3084-SB-4	700X2100	4"
WT-2496-SB-4	600X2400	4"	WT-3096-SB-4	700X2400	4"
WT-24108-SB-4	600X2700	4"	WT-30108-SB-4	700X2700	4"
WT-24120-SB-4	600X3000	4"	WT-30120-SB-4	700X3000	4"



Stainless steel 2 - Layers dining cart (Round tube)

Model	Dimension	Material
ETL001	860x530x950	201/430
ETL002	810x460x850	201/430



Flat top work table

#1.2MM. 430S/S top shelf galvanized under shelf and hat channel, Galvanized leg and socket, Plastic bullet foot, carton packing.

Item No.	Size(mm)	Back splash	Item No.	Size(mm)	Back splash
WT-2424-E	600X600	0	WT-2424-S	600X600	0
WT-2436-E	600X900	0	WT-2436-S	600X900	0
WT-2448-E	600X1200	0	WT-2448-S	600X1200	0
WT-2460-E	600X1500	0	WT-2460-S	600X1500	0
WT-2472-E	600X1800	0	WT-2472-S	600X1800	0
WT-2484-E	600X2100	0	WT-2484-S	600X2100	0
WT-2496-E	600X2400	0	WT-2496-S	600X2400	0
WT-24108-E	600X2700	0	WT-24108-S	600X2700	0
WT-24120-E	600X3000	0	WT-24120-S	600X3000	0
WT-3030-E	700X700	0	WT-3030-S	700X700	0
WT-3036-E	700X900	0	WT-3036-S	700X900	0
WT-3048-E	700X1200	0	WT-3048-S	700X1200	0
WT-3060-E	700X1500	0	WT-3060-S	700X1500	0
WT-3072-E	700X1800	0	WT-3072-S	700X1800	0
WT-3084-E	700X2100	0	WT-3084-S	700X2100	0
WT-3096-E	700X2400	0	WT-3096-S	700X2400	0
WT-30108-E	700X2700	0	WT-30108-S	700X2700	0
WT-30120-E	700X3000	0	WT-30120-S	700X3000	0



Stainless Steel Double - line Cake Cart

Model	Dimension	Packing Dimension	Remarks
ET-LR2-6A	920x620x1000	900x660x140	12 pans
ET-LR2-6H (thicken)	920x620x1000	900x660x140	12 pans
ET-LR2-10A	920x620x1300	1200x660x140	20 pans
ET-LR2-10H (thicken)	920x620x1300	1200x660x140	20 pans
ET-LR2-15A	920x620x1735	1650x660x140	30 pans
ET-LR2-16A	920x620x1735	1650x660x140	32 pans
ET-LR2-15H (thicken)	920x620x1735	1650x660x140	30 pans
ET-LR2-16H (thicken)	920x620x1735	1650x660x140	32 pans

A = S/S thickness 0.8mm

H = S/S thickness 1.0mm

Standard pans size: 60*40cm



Stainless Steel Cake Cart

Model	Dimension	Packing Dimension	Remarks
ET-LR-15A	470x620x1735	1650x660x110	15 pans
ET-LR-16A	470x620x1735	900x660x110	12 pans
ET-LR-15H	470x620x1735	1200x660x110	20 pans
ET-LR-16H	470x620x1735	1200x660x110	20 pans

Stainless Steel Sink

Item No	Dimension	Tank size
YSA-1-1300L	1300x600x900	450x450x250
YSA-1-1400L	1400x600x900	600x400x250
YSA-1-1500L	1500x600x900	600x400x250
YSA-1-1700L	1700x600x900	600x400x250
YSA-1-1900L	1900x600x900	600x400x250
YSA-1-2200L	2200x600x900	600x400x250
YSA-1-2400L	2400x600x900	600x400x250



Stainless Steel Sink

Item No	Dimension	Tank size
YSA-1-1300R	1300x600x900	450x450x250
YSA-1-1400R	1400x600x900	600x400x250
YSA-1-1500R	1500x600x900	600x400x250
YSA-1-1700R	1700x600x900	600x400x250
YSA-1-1900R	1900x600x900	600x400x250
YSA-1-2200R	2200x600x900	600x400x250
YSA-1-2400R	2400x600x900	600x400x250



Stainless Steel Sink

Item No	Dimension	Tank size
YSA-2-1500	1500x600x900	450x450x250
YSA-2-1700	1700x600x900	450x450x250
YSA-2-1900	1900x600x900	450x450x250
YSA-2-2200	2200x600x900	450x450x250

Stainless Steel Sink

Item No	Dimension	Tank size
YSA-2-1500R	1500x600x900	450x450x250
YSA-2-1700R	1700x600x900	450x450x250
YSA-2-1900R	1900x600x900	450x450x250
YSA-2-2200R	2200x600x900	450x450x250



Wire rack 4f,5ft,6ft



Display rack 4f,5ft,6ft

Product:

LAUNDRY EQUIPMENT





20Kg Washer



25Kg Automatic Washer



30kg automatic Washer



Steam Iron



15Kg Washer



**Electric Industrial
Laundry Iron press**



Electronic Steam Iron press



25Kg Cloth Dryer



12Kg Cloth Dryer



“

*An ideation aint
work without
execution*

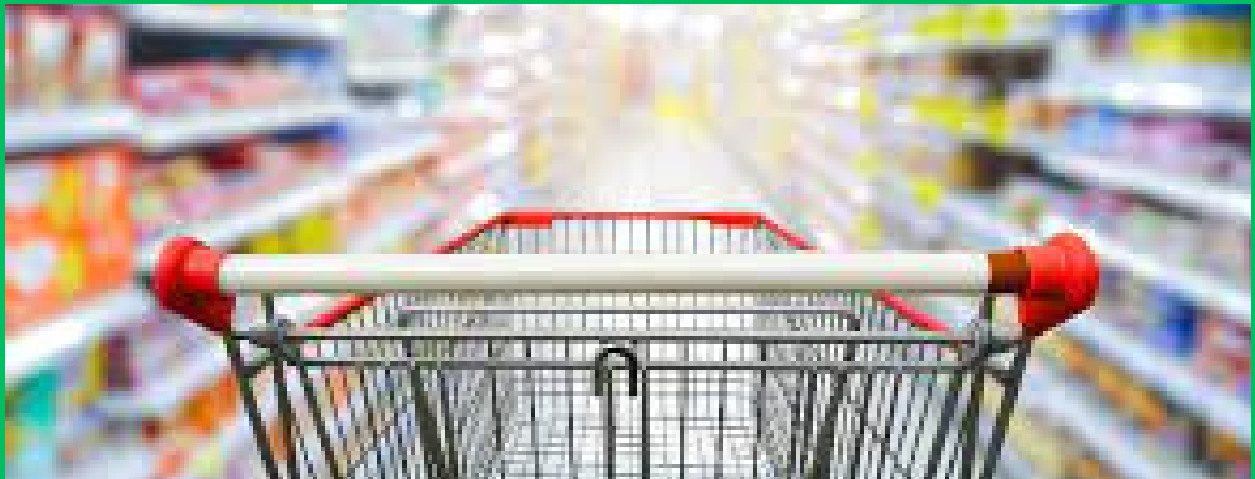
Contact Us

**Address : Head office No 81 Olojo drive opp
ever right Lab . Alaba international market.**

**Lekki office: MY GROCERIES 2 GO LIMITED of
Close 22A, Victoria Garden City, Lekki Ajah
Expressway, Lagos.**

About us!

Afess Industrial is a brand that specialises in the production, sale & distribution of kitchen, bakery, laundry and packaging equipments like ovens, mixers, chillers, washing machines etc.



Contact Us

Office:

NO 81, Olojo Drive,
opposite Ojoo Police
station, Lagos Nigeria

Email:

[afesscommercial@
gmail.com](mailto:afesscommercial@gmail.com)